

The World's First Eco-friendly and Fuel-free
Electric-heating



Hot & Cold Water High-pressure Pump Washer

Fuel costs are reduced by
70% to 80% as compared to fossil fuels!



- Patent No. 10-1051912
- Digital touch method
- Pollution-free with minimal noises
- Designed and installed an auto-off device for the pump motor
- Integrated freeze-protection for winter
- Oil change notification lamp/time check
- When the pump is idle for 2 minutes, it will automatically stop.
- When it is not used for 1 hour, it will automatically stop.
- The top case is made of ABS (non-corrosive)
- Equipped with a wired remote control (remote ON/OFF feature)

Electric heater type hot and cold water
high-pressure pump washer
SH-ECH 928-4(275bar)



Steam cleaner
(Wastewater free)
SH-H2000(22bar)



Cold water high-pressure
pump washer
SH-C275(275bar)



Ultra-compact hot and
cold water pressure washer
SH-H2000(22bar)



Clean the World

SUNGHWA corporation



NAVER

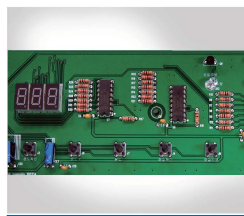
Sunghwa Inc

Features of hot and cold water high-pressure pump washer

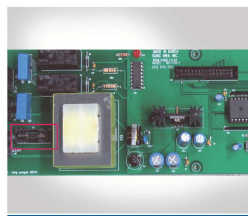
- Significant fuel cost reduction effect** - The electric heater heating technique, which does not utilize kerosene or diesel as fuel, can save fuel costs by at least 70% to 80%.
- No consumable expenses** - The electric heater technology does not necessitate consumable costs, and the hot water heater is designed to be semi-permanent.
- Fast preheating and consistent temperature** - When hot water is utilized, the temperature rises from 55 to 80°C in 10 to 90 seconds and remains constant even during continuous use.
- Auto-off motor** - With a new control board is developed and fitted, when the gun is not utilized while operating, the motor turns off after 15 seconds. The motor and magnetic switch are protected before 15 seconds since only the bypass runs, even if it is used and stopped repeatedly. (It keeps the motor off for more than 3 hours)
- Freeze protection** - You can use it with a sense of assurance even throughout the cold winter season.
- Oil change cycle notification flashing lamp** - The flashing lamp indicates when it is time to change the oil.
- Remote machine control** - An auxiliary switch enables remote machine control.
- Pollution-free, eco-friendly cleaning** - Because it does not utilize fossil fuels, it entirely eliminates noise, smoke, and pollution concerns.
- Simple to install and transport** - Because it is lightweight, it is simple to install and transport.
- Power shut-off (trap) in case of emergency** - Power is automatically cut off in the event of an emergency, such as overheating or a short circuit.
- To avoid corrosion, the upper case ABS, plastic, frame, and parts are galvanized and powder coated.



Remote wired auxiliary switch



Digital operation PCB board



Main PCB board



Digital touch method operation and information panel

Specifications of the electric-heating hot and cold water high-pressure pump washer 3 phase power 380V (220V, 440V)

Spec Division	Model	Pressure (bar)	Discharge amount (L/min)	Motor capacity (HP)	Heater capacity (kW)	Related Voltage	Temperature (°C)	Weight (kg)	Size (W x L x H)
Ultra-large	SH-ECH500-4	500	15	20HP	39	90A	0~80	174	780 x 510 x 820
	SH-ECH400-4	400	15	15HP	39	75A	0~80	174	780 x 510 x 820
	SH-ECH300-4	275	15	10HP	39	75A	0~85	168	750 x 500 x 790
	SH-ECH300-3	275	15	10HP	39	60A	0~80	168	750 x 500 x 790
	SH-ECH928-4	275	15	10HP	39	75A	0~85	197	750 x 500 x 790
	SH-ECH928-3	275	15	10HP	30	60A	0~80	180	750 x 500 x 790
	SH-ECH200-4	200	15	7.5HP	39	75A	0~80	157	750 x 500 x 790
	SH-ECH200-3	200	15	7.5HP	30	60A	0~80	156	750 x 500 x 790
	SH-ECH200-2	200	15	7.5HP	26	50A	0~80	156	750 x 500 x 790
	SH-ECH721-3	200	15	7.5HP	30	60A	0~80	180	750 x 500 x 790
	SH-ECH721-2	200	15	7.5HP	26	50A	0~80	180	750 x 500 x 790
	SH-ECH921-4	200	15	7.5HP	39	75A	0~85	185	750 x 500 x 790
large	SH-ECH921-3	200	15	7.5HP	30	60A	0~80	168	750 x 500 x 790
	SH-ECH921-2	200	15	7.5HP	26	50A	0~70	166	750 x 500 x 790
	SH-ECH956-2	160	13	5HP	26	50A	0~70	117	750 x 450 x 750
	SH-ECH154-2	160	13	5HP	26	50A	0~70	117	750 x 450 x 750
	SH-ECH756-2	160	13	5HP	26	50A	0~70	117	750 x 450 x 750
	SH-ECH140-1	130	8	3HP	15	30A	0~65	112	750 x 500 x 790
	SH-ECH130-2	130	7	1HP	10(单相)	50A	15~75	54	630 x 220 x 515
	SH-ECH130-1	130	7	1HP	5(单相)	27A	15~60	54	630 x 220 x 515
	SH-ECH130	130	7	1HP	3(单相)	19A	15~75	54	630 x 220 x 515
	SH-ECH110-3	110	6	1HP	3(单相)	19A	15~60	51	630 x 220 x 515
	SH-ECH110-2	110	6	1HP	3(单相)	19A	15~60	51	630 x 220 x 515
	SH-ECH110-1	110	6	1HP	3(单相)	19A	15~60	51	630 x 220 x 515
Medium	SH-ECH956-2	160	13	5HP	26	50A	0~70	117	750 x 450 x 750
Small	SH-ECH140-1	130	8	3HP	15	30A	0~65	112	750 x 500 x 790
Ultra-small (Single phase 220V)	SH-ECH130-2	130	7	1HP	10(单相)	50A	15~75	54	630 x 220 x 515
	SH-ECH130-1	130	7	1HP	5(单相)	27A	15~60	54	630 x 220 x 515
	SH-ECH130	130	7	1HP	3(单相)	19A	15~75	54	630 x 220 x 515
	SH-ECH110-3	110	6	1HP	3(单相)	19A	15~60	51	630 x 220 x 515

Spec Division	Model	Pressure (bar)	Discharge amount (L/min)	Motor capacity (HP)	Heater capacity (kW)	Related Voltage	Temperature (°C)	Weight (kg)	Size (W x L x H)
Cold water high pressure pump washers	SH-C300	300	15	3P 10HP				115	700 x 500 x 500
	SH-C275	275	15	3P 10HP				130	700 x 500 x 500
	SH-C201	200	15	3P 7.5HP				105	700 x 500 x 500
	SH-C200	200	15	3P 7.5HP				120	700 x 500 x 500
	SH-C140	140	15	3P 2P 5HP				50	650 x 400 x 450
	SH-C100	100	13	3P 2P 3HP				45	650 x 400 x 450
Engine-type custom tube washers	SH-EC200-40	200	40	27HP				90	850 x 530 x 800
	SH-EK200-50	200	50	23HP				90	850 x 530 x 800
	SH-EK250-30	250	30	27HP				90	850 x 530 x 800
Steam cleaners	SH-H2601	20	1.2		3P 26kW	3P 380V 42A	120~150	70	370 x 635 x 600
	SH-H2001	22	0.7		3P 20kW	3P 380V 32A	120~150	68	370 x 635 x 600
	SH-H1501	18	0.6		3P 15kW	3P 380V 24A	120~150	66	370 x 635 x 600
	SH-H700	10	0.2		2P 7kW	2P 220V 31A	110~140	31	360 x 630 x 250
	SH-H400	7	0.1		2P 4kW	2P 220V 18A	110~140	31	360 x 630 x 250



Check out the work video on the website! www.shinc.co.kr

“Sunghwa high-pressure pump washer has been in operation since 1965.”

Ultra large hot and cold water
high-pressure pump washer
SH-ECH500-4(500bar)



Ultra large hot and cold water
high-pressure pump washer
SH-ECH400-4(400bar)



Engine-type custom tube washer
SH-EC200-40(200bar)



Cold water high-pressure pump washer
SH-CL200



Engine-type cold water high-pressure
pump washer
SH-EK250-30



Sewer pipe washing nozzle
SH-0704



Petroleum-type steam cleaner
SH-H200



Electric-heating steam cleaner
(3 phase) SH-H2000



Electric-heating steam cleaner
(single phase) SH-H400



▲ Bypass



▲ Pressure switch



▲ Switch-attached
bypass



▲ Gun



▲ Spray nozzle



▲ Manual reel for
large vehicles (50m)



▲ Rotating nozzle



▲ Various lances



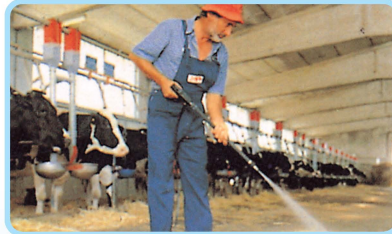
▲ Stainless manual reel
(30~60m)



Check out the work video on the website!

www.shinc.co.kr

Places where hot and cold high-pressure pump washers are used



A first-rate enterprise that insists on high-quality craftsmanship.

"Sunghwa Inc"

We produced the first steam cleaner in Korea in 1965, obtained a number of utility model patents, CE, and ISO certifications, and developed and acquired the patent for the world's first eco-friendly, fuel-free electric heater type hot and cold water high-pressure pump washer.

Experience the "Sunghwa Washer," which has been registered with the Public Procurement Service's Online E-Procurement System.



Clean the World

SUNGHWA corporation

Head office, Manufacturing plant

#512, D-dong, 261, Doyak-ro, Wonmi-gu, Bucheon-si, Gyeonggi-do, Korea

T. +82-32-670-7311~2 F. +82-32-670-7314

E. yshinc@shinc.co.kr W. <http://www.shinc.co.kr/>